

NEXTY ELECTRONICS WORLD

vol.167 APR 2017





Be the Next Bridge to the Future

Tomen Electronics Corp. and Toyota Tsusho Electronics Corp. merged to become NEXTY Electronics on April 1, 2017.

NEXTY Electronics will become an Electronics Company active throughout the world that brings the Technology, Quality, and Functionality of both companies to a whole new level while taking advantage of its global network.



President Atsushi Aoki

Top Message

NEXTY Electronics Corporation was launched in April 2017.

In addition to driving the evolution of car electronics for automated driving through innovation and industry transformation, NEXTY Electronics will specialize in technological products that will offer solutions to social issues while responding to customer and global needs in a wide range of fields that include IoT and industrial equipment.

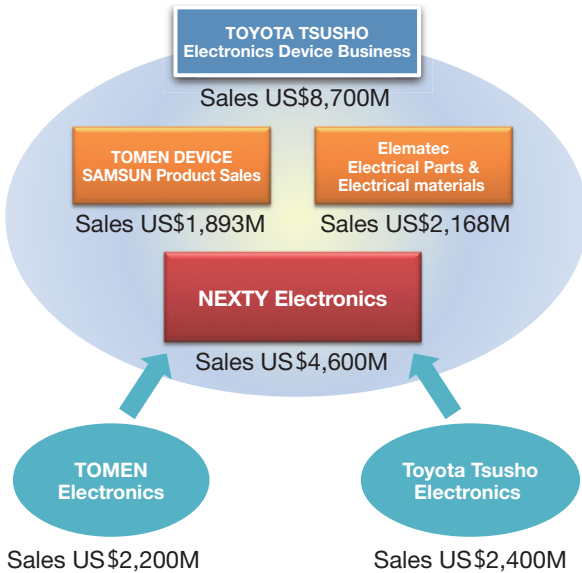
The concepts integrated into the company name will be instilled in each and every employee. The company aims to create a new company of equals diversity of thought and culture, where everyone works and cooperates together in one heart no matter what position and what nationality we are.

Being a core company in Toyota Tsusho Group's electronics business, everyone at NEXTY Electronics is dedicated to contribute wholeheartedly that is a driving force to bring out the greatest synergy.

We look forward to your continued support in the future, thank you.

NEXTY Electronics Role in the Toyota Tsusho Group

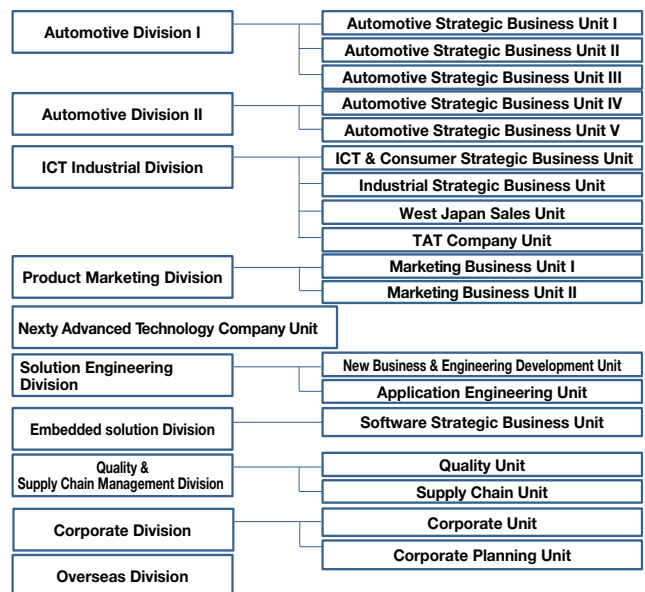
As a core company in Toyota Tsusho Group's electronics business, we will leverage the group's collective capabilities to lead the electronics industry.



As of Mar. 2016

New Organization

Our aim is to be a 'user-oriented' Electronics Company that works closely with customers, understands their industry characteristics and applications, and provides them with superior solutions.



The Inspiration for Our Corporate Symbol

The dynamic red gradation symbolizes the merging of two companies, and the synergistic benefits that will facilitate new stages of growth. The N represents the first letter of NEXTY, with the silver color conveying a spirit of innovation. This composition evokes a sense of our active approach to constantly pursue the 'NEXT Technology' and deliver it to the world. Together, the two symbols form T, representing Tomen Electronics and Toyota Tsusho Electronics.

~The largest in Japan, the world's largest electronics trading company in the automotive field~

NEXTY's Strengths

Ability to Propose Solutions Based on the Technology, Quality, and Functionality Built Up in the Vehicle-mounted Technology Field

We will create businesses that bring about the next key products around our vehicle-mounted technology. (ICT, industrial fields, etc.)



NEXTY Electronics has full coverage of supply chain system

Quality Support

[VA Center]



TEL : 042-846-0088
FAX : 042-846-0099

[Functions]

- Memory data overwriting
- Taping and packaging
- Visual and function sampling inspection
- Defect analysis

[TAQS Center]



TEL : 056-696-4433
FAX : 056-697-3467

[Functions]

- Defect analysis
- Reliability evaluation
- Visual and function sampling inspection
- Taping and packaging

[Manual visual inspection]



Visual inspection with microscope



Automatic visual inspection device

[Function inspection]



HDD failure analysis



Communication module inspection



LCD dynamic operating inspection



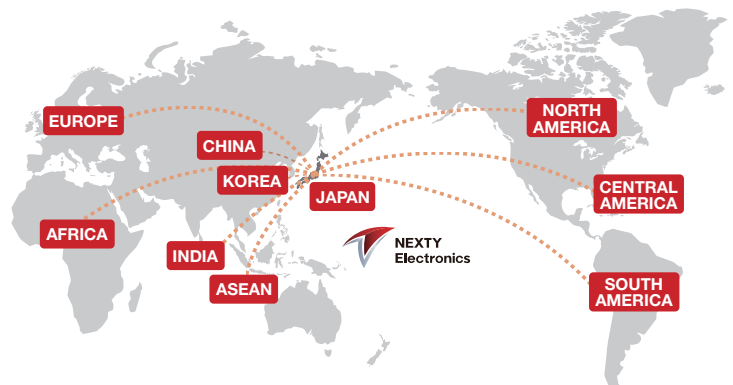
We provide testing, screening, initial defect analysis, failure analysis, root cause analysis, as well as a variety of product support, such as device programming, laser marking, and stick and tray taping.

NEXTY's 34 Global Offices

Toyota Tsusho Group's Global Network Developed Across More Than 90 Countries

We aim to deliver highly refined support to customers while building up new business.

- Sales from major semiconductor manufacturers to overseas production bases
- Establishing warehouses dedicated to electronic parts (temperature/humidity control, anti-electrostatic measures, and lot management)



The Inspiration for Our Catchphrase

We don't just create the future of electronics—we create the future of people

Competition grows exponentially and differentiation is vital in the electronics industry, so our catchphrase is instilled with NEXTY Electronics' approach to not just take the next step, but to aim for the next phase. The word "next" has a broad meaning that applies not only to future of electronics, but to the future of people as well. Our role in the future of Japan and the world as well as impressive scale puts us at NEXTY Electronics in a unique position to talk about future possibilities with words that carry weight.

Inquires : Corporate planning Dept. TEL.03-5462-9666

The top half of the image features a solid red background. Overlaid on this are several semi-transparent, overlapping geometric shapes in various shades of red. These shapes include a large circle, several triangles of different sizes and orientations, and some curved, ribbon-like forms. The overall effect is a complex, layered composition of geometric patterns.

Be the Next Bridge to the Future