



Infineon Smart Building Solution

How Predictive Maintenance can cut costs and increase reliability by putting the ‘smarts’ into smart buildings

www.infineon.com/predictivemaintenance



Contents

1. Abstract	3	6. Predictive Maintenance in HVACR – a working demonstration unit	8
2. Predictive Maintenance – a definition	4	7. Pervasiveness of Predictive Maintenance	9
3. Challenges and preconditions	5	8. Summary	10
4. Ecosystem overview	6		
5. The evaluation kit	7		

1. Abstract

Maintenance used to be simply reactive. Just fix something when it goes wrong but that can be costly with unscheduled downtimes for repairs. It is better and more cost effective to proactively plan downtimes when they have the least impact on production. There are a couple of ways to do this. Preventative Maintenance uses historical data to anticipate when a part is likely to fail so that it can be replaced beforehand but expensive parts can be replaced when they still have useful life in them. And parts can fail prematurely so unscheduled downtime can still occur. For Heating, Ventilation, Air Conditioning and Refrigeration (HVACR) systems in buildings, this means staff in offices are inconvenienced or can't work. This can be even worse for buildings such as hospitals where HVACR is mission critical to proper operations.

Much better to be smarter and know exactly how each critical component is performing in real time to be able to accurately predict when it needs to be replaced because it is showing early warning signs. This new Predictive Maintenance approach creates the 'smarts' with the pervasive use of sensors for condition monitoring and then an ecosystem to process the data to provide the intelligence of when to replace parts.

This exciting new level of maintenance schemes is a key part putting the smarts into smart buildings so that they can be operated in a highly cost-effective manner to reduce waste and reduce downtime. Infineon is helping the development of Predictive Maintenance by partnering with other leaders in the IoT (Internet of Things) value chain to create this ecosystem based on its extensive range of sensors. This enables customers to rapidly develop products by providing off-the-shelf, proven components that are fundamental to predictive solutions for new and legacy installations.

2. Predictive Maintenance – a definition

Traditionally, maintenance has been about checking that machinery appears to be running correctly, cleaning it and replacing a part when it fails. This could happen at any time and production has to stop while it is fixed. This unscheduled downtime can be very disruptive and costly.

The solution, called Preventative Maintenance, is to work out the average life of each component, which is known as the Mean Time Before Failure (MTBF). This enables a schedule of replacement of parts to be created so that they are replaced before the MTBF is reached. Now, downtime occurs when it has the least impact based on when failures are anticipated to occur.

However, it is only a partial solution as parts can fail earlier than expected so expensive unscheduled downtimes can still occur. There is also a downside to this approach in that parts could be replaced when they are still perfectly functional with plenty of operational life in them, which is an unnecessary cost.

These two issues can be solved by actually knowing when a failure is going to happen so that remedial action can be taken beforehand. This is known as Predictive Maintenance. The predictions come from having real time data from sensors on the performance of key components. This is combined with the intelligence to recognise when something is starting to go wrong so that it can be fixed at a convenient downtime. Thus parts are only replaced when they need to be, solving the second issue.

An analogy between weather forecasting and maintenance schemes

- › Traditional Maintenance is going for a walk today. If it rains, you buy an umbrella and put it up.
- › Preventative Maintenance is looking at historical records to see if it typically rains on this day of the year. If it usually does, you buy an umbrella for today but it might not actually rain.
- › Predictive Maintenance is gathering data from various locations over time so that an accurate prediction on whether it will rain or not can be made. You only buy an umbrella if rain is predicted.

3. Challenges and preconditions

The more data, the smarter

To continue the weather analogy, the accuracy of weather forecasting has improved over the years because more data-points are available. In addition, the computer algorithms are more sophisticated making predictions better and better. And so it is with Predictive Maintenance, the more datapoints that can be gathered, the better able is the system to be aware of what is happening and thus give more accurate predictions.

In practical terms, this means sensors positioned on critical components to gather the data on their real time status and performance – known as Condition Monitoring. These sensor-equipped parts are also known as Internet of Things (IoT)-enabled devices. IoT has been forecasted to be huge but, until now, has not grown at the rate expected. This is because it needs sensors that deliver the performance required in small packages at the right price point so that they can be prolifically used. Infineon has solved this bottleneck with its XENSIV™ range of best-in-class sensors that set new standards for performance and low power within small and robust packages. It provides an extensive range to address all the commonly required types of sensors needed, providing the foundations upon which to build Predictive Maintenance and Condition Monitoring solutions.

The range of XENSIV™ sensors

- › Gas sensors for CO₂ to monitor indoor air quality - XENSIV™ PAS CO₂
- › Barometric air pressure sensors for air flow measurement - XENSIV™ DPS368
- › MEMS microphone for noise anomaly detection XENSIV™ IM69D130
- › 24 GHz Radar and 3D Magnetic Sensors for detection of malpositioned motors and compressors - XENSIV™ BGT24LTR11 and XENSIV™ TLI493D-A2B6
- › Current sensor for motors and compressors - XENSIV™ TLI4971
- › Hall effect magnetic sensor for vibration monitoring - XENSIV™ TLE4997E2

To complement the sensor range, Infineon offers microcontrollers for data processing with optional integrated Wi-Fi or Bluetooth connectivity, and the OPTIGA™ Trust M security controller IC for highly secure, cloud access by devices.

Also, an increasing number of products have performance monitoring built in such as Infineon's intelligent digital power supplies and motor control solutions in its iMotion class of products. These generate data that can be used for Predictive Maintenance.

Gathering the data

The second challenge is being able to handle and process the huge amount of data in real time to identify the start of any deviations from normal parameters. The larger the incoming dataset and the more sophisticated the analysis algorithms, the more reliable and accurate becomes the Predictive Maintenance and therefore the greater the cost savings it provides.

This huge volume of data management requires edge processing, i.e. funnelling data from various sensors into a microcontroller where it can be processed from raw data into intelligent information. This is then sent on for further processing to make decisions about the status of components. Infineon provides microcontrollers such as the XMC4700 that are designed specifically for this task along with security to protect the data from the edge to the cloud. Called OPTIGA™ Trust M, this hardware-based security IC provides authentication and with multi-account registration.

4. Ecosystem overview

In order to help companies create Predictive Maintenance solutions based on its sensors, Infineon has teamed up with Amazon Web Services (AWS), a part of Amazon, to provide the cloud services to handle and analyse the data harvested. It has also partnered with Klika Tech, an IoT service provider who supports customers to integrate intelligence and cloud services to their products.

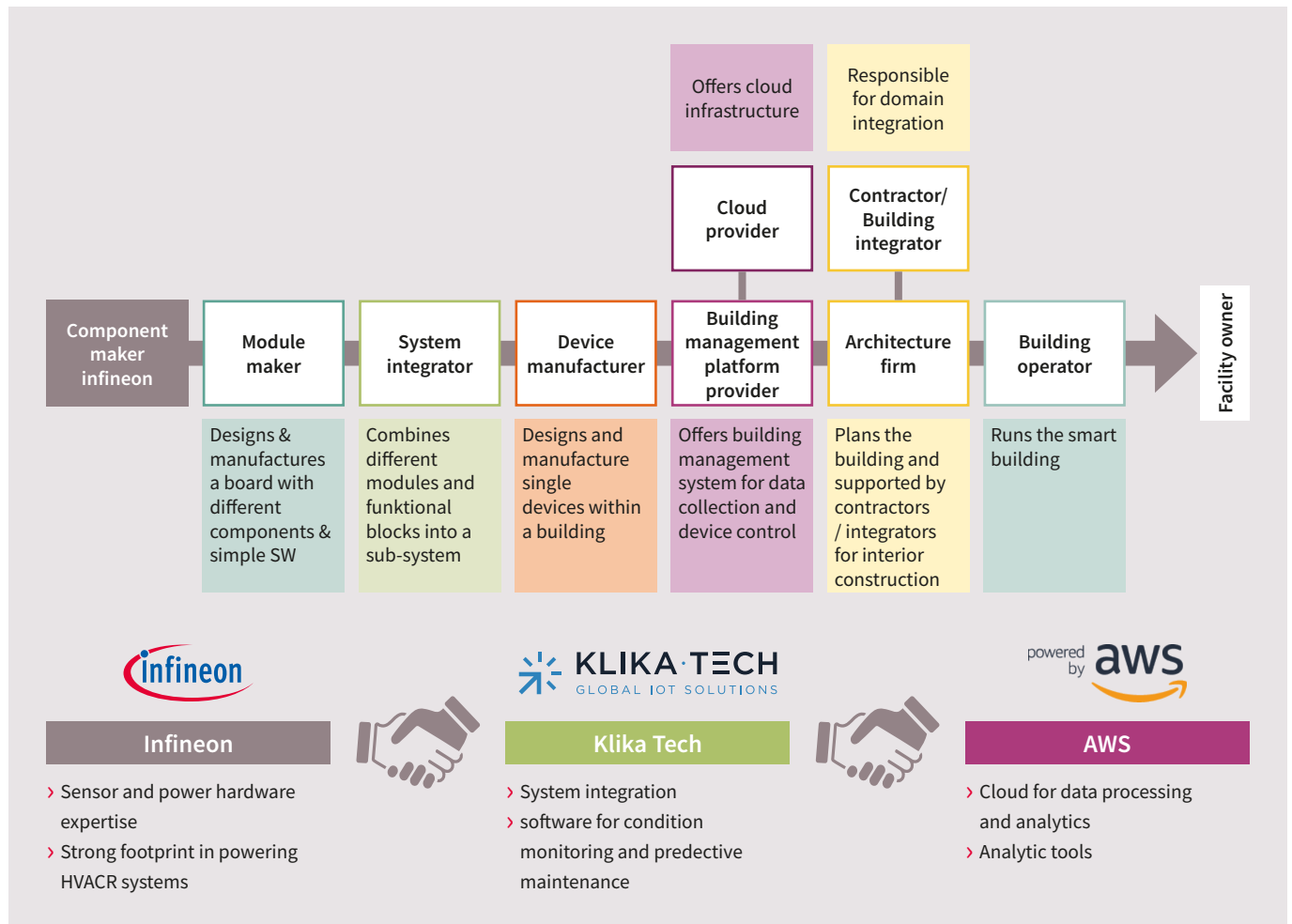


Figure 1: The value chain for smart building technology – a complex ecosystem

5. The evaluation kit

This provides a simple-to-use starting point for customers to see how easy it is to use the integrated solution from the three companies to create their own products for the markets they want to address. Customers can focus on their value add of creating the specific solutions for their target markets, safe in the knowledge that critical areas, which form the foundations of the value chain for Predictive Maintenance solutions, have already been addressed and solved.

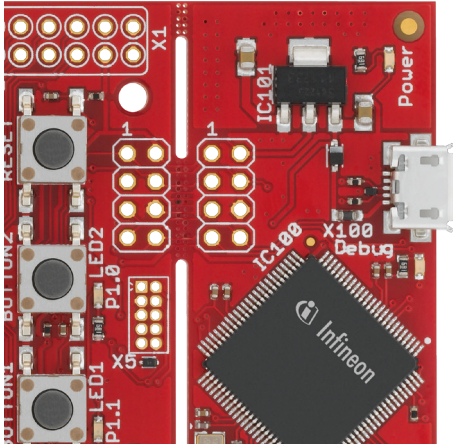


Figure 2: Infineon Evaluation Kit

The kit has an adapter board that provides a reference setup so that a variety of different configurations to be evaluated and includes barometric air pressure and temperature, magnetic current and Hall or MEMS microphone sensors with others available as required.

The board has an Infineon XMC4700 microcontroller that runs the FreeRTOS software framework and the OPTIGA™ Trust M high-end hardware security solution. In addition, a basic set of software is included that handles the collection of data, pre-processing it and then sending it to the AWS cloud for full processing. The kit thus provides a platform for testing solutions for real-time, edge-to-cloud data management.

6. Predictive Maintenance in HVACR – a working demonstration unit

Heating, Ventilation, Air Conditioning and Refrigeration (HVACR) is an excellent example of a suitable area for Predictive Maintenance inside a building as equipment failure can cause severe problems and costs. To demonstrate how such a system works, Infineon, Klika Tech and AWS have created demonstrator units using portable air conditioning units. Condition monitoring checks the status of critical components such as compressors, motors, fans in real time so that any anomalies can be immediately detected and Predictive Maintenance performed. In this case (Figure 3), the current flow of the cold fan, the hot fan and the compressor are monitored and processed to provide an easy-to-read dashboard that alerts to any anomalies along with air-flow monitoring using barometric pressure sensors.

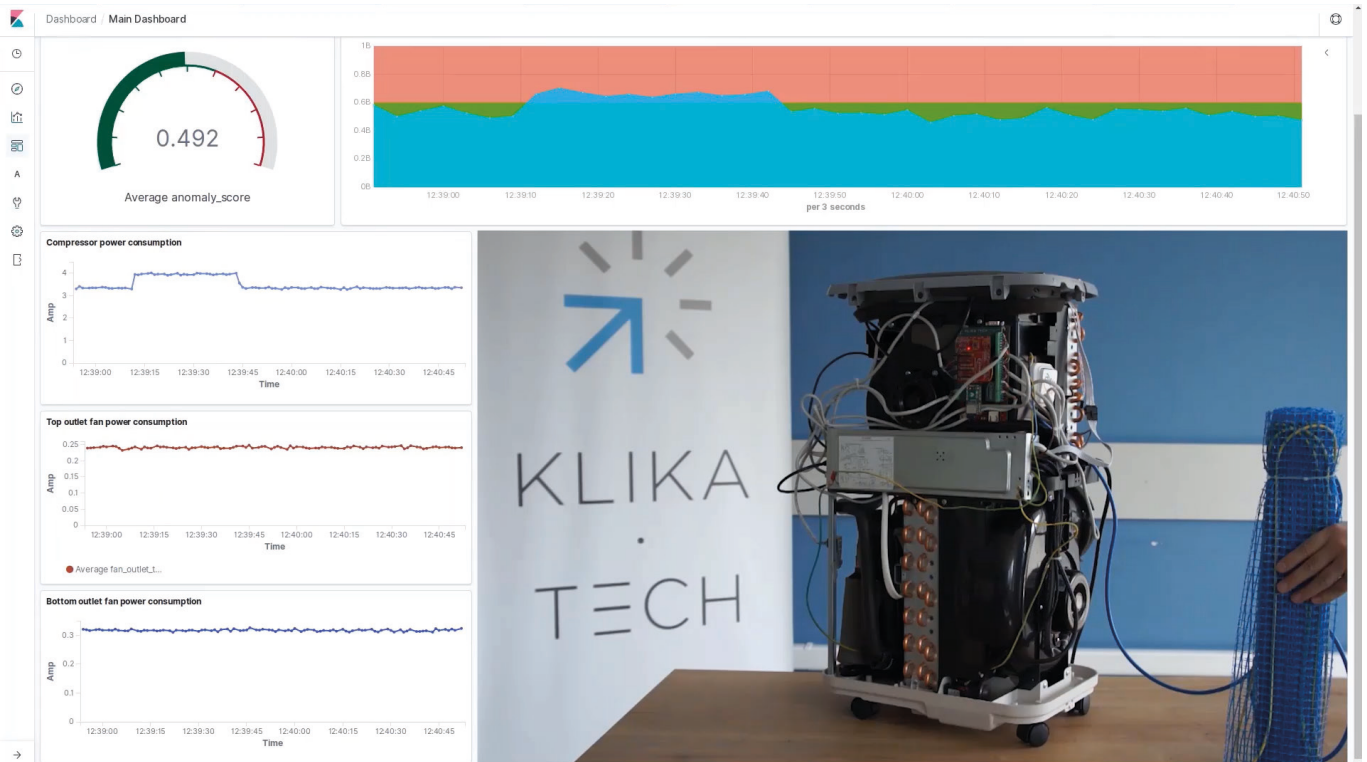


Figure 3: HVAC demonstration unit (on the right) and the real-time sensor data for condition monitoring (on the left)

Example of dirty air filter

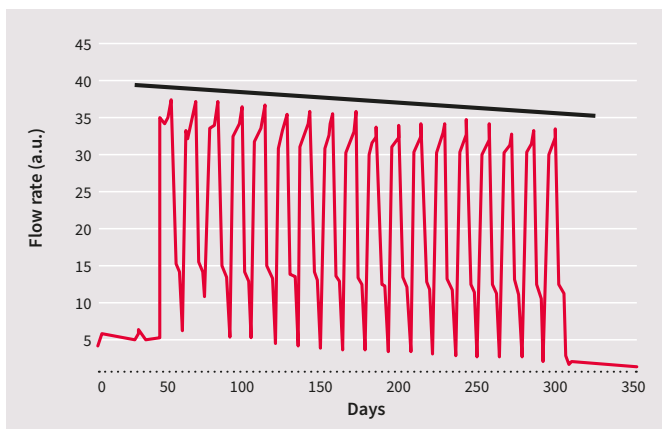


Figure 4: The decrease of the air flow rate in HVACR over time due to clogging filter

An Infineon barometric air pressure sensor monitors the air flow rate in an HVACR system. The graph shows it to be slowly declining because the air filter is becoming clogged and it will need to be cleaned or replaced before it reaches the point where it places a strain on the motors. This is a much more accurate and reliable system than simply changing or cleaning the filters at regular intervals. It detects the amount of actual dirt build up, which can be very variable on a day-to-day basis, and can be used to adjust the maintenance scheme to only when actually needed and thus save costs.

7. Pervasiveness of Predictive Maintenance

Predictive Maintenance provides the intelligence to know exactly what is happening in critical parts of a system in real time. It puts the 'smart' into smart buildings and smart factories, with many new application areas being added all the time. In each case, knowledge about actual moment-to-moment performance can make systems more reliable and reduce operating costs giving a tangible ROI (Return On Investment) in addition to reduced maintenance costs.

Predictive Maintenance enables equipment to be fixed before it fails thus avoiding closing parts of buildings while waiting for it to be repaired. HVACR forms a critical part of the infrastructure of a building so its continual, correct operation can be vital such as in the case of hospitals, airports, etc.

In addition, all the data that is being constantly gathered means that the building operation system in a smarter building "intuitively" knows if people are in a room to turn the lights on, what the CO₂ levels are in each area to adjust the ventilation, what the heating or air conditioning should be in each area, etc. so that the building does not waste energy and, importantly, ensures the tenants' continuous comfort and satisfaction.

In the case of smart factories, Predictive Maintenance forms part of Industry 4.0 and can improve productivity, reduce waste and increase profitability. New factories are built with the latest data gathering and analysis technologies. And there is a big market to retro fit Predictive Maintenance systems to legacy factories so that they can successfully compete with new ones.

8. Summary

Infineon provides a one stop shop for the key sensors and microcontrollers needed to provide intelligent, real-time monitoring with partners to provide the key additional products needed for complete solutions. This links the real analog world that we live in and the digital world of computers and software. Infineon products and the associated ecosystem of its partners makes Predictive Maintenance possible in a wide variety of applications in smart buildings for improved reliability and operations, with the added benefits of reduced operating costs and ensuring continuously optimal conditions for tenant comfort.

Where to buy

Infiniteon distribution partners and sales offices:

www.infineon.com/WhereToBuy

Service hotline

Infiniteon offers its toll-free 0800/4001 service hotline as one central number, available 24/7 in English, Mandarin and German.

- > Germany 0800 951 951 951 (German/English)
- > China, mainland 4001 200 951 (Mandarin/English)
- > India 000 800 4402 951 (English)
- > USA 1-866 951 9519 (English/German)
- > Other countries 00* 800 951 951 951 (English/German)
- > Direct access +49 89 234-0 (interconnection fee, German/English)

* Please note: Some countries may require you to dial a code other than "00" to access this international number.
Please visit www.infineon.com/service for your country!



Mobile product catalog

Mobile app for iOS and Android.

www.infineon.com

Published by
Infineon Technologies AG
81726 Munich, Germany

© 2019 Infineon Technologies AG.
All rights reserved.

Please note!

This Document is for information purposes only and any information given herein shall in no event be regarded as a warranty, guarantee or description of any functionality, conditions and/or quality of our products or any suitability for a particular purpose. With regard to the technical specifications of our products, we kindly ask you to refer to the relevant product data sheets provided by us. Our customers and their technical departments are required to evaluate the suitability of our products for the intended application.

We reserve the right to change this document and/or the information given herein at any time.

Additional information

For further information on technologies, our products, the application of our products, delivery terms and conditions and/or prices, please contact your nearest Infineon Technologies office (www.infineon.com).

Warnings

Due to technical requirements, our products may contain dangerous substances. For information on the types in question, please contact your nearest Infineon Technologies office.

Except as otherwise explicitly approved by us in a written document signed by authorized representatives of Infineon Technologies, our products may not be used in any life-endangering applications, including but not limited to medical, nuclear, military, life-critical or any other applications where a failure of the product or any consequences of the use thereof can result in personal injury.